

Appendix 1 - Key Stage Two Comparator Report

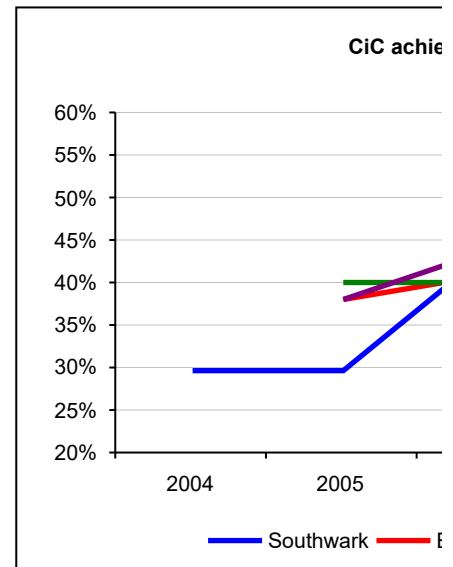
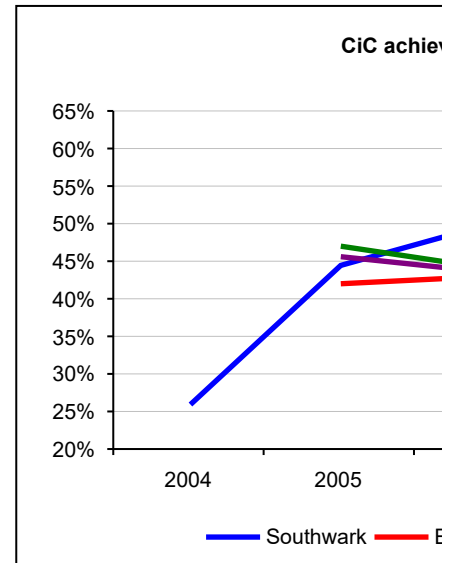
	2004		2005		2006		2007		2008	
Section 4 :	27		27		34		15		26	
Key Stage 2	24	89%	26	96%	30	88%	13	87%	16	62%
	7	26%	12	44%	17	50%	9	60%	8	31%
	8	30%	8	30%	15	44%	6	40%	7	27%
	10	37%	16	59%	20	59%	10	67%	13	50%

KS2 English

	2004	2005	2006	2007	2008	2009p
Southwark	26%	44%	50%	60%	31%	40%
England		42%	43%	46%	46%	
London		47%	44%	49%	49%	
SN average		46%	44%	48%	52%	
Sthw Target					50%	56%

KS2 Maths

	2004	2005	2006	2007	2008	2009p
Southwark	30%	30%	44%	40%	27%	45%
England		38%	41%	43%	44%	
London		40%	40%	48%	44%	
SN average		38%	44%	51%	52%	
Sthw Target					50%	56%



2009	item	Data definitions
20	4a	Number in year 6 at school who were eligible for the end of Key Stage 2 tests
19	4b	Of these: - the number who sat all of these tests
8	4c	Number who attained at least level 4 in the following tests: - english
9	4d	- mathematics
15	4e	- science

ving level 4+ in KS2 English



ving level 4+ in KS2 maths



